

Built-Up Thermowells

Model TWB

According ANSI/ASME or DIN 43772

Features

- Materials according ISO 15156/NACE MR 01-75
- Selection of materials
- Standard and customer specifications
- DIN and ANSI/ASME process connections
- Various pipe size

Ratings

DIN up to PN100

ANSI/ASME up to 1500 lbs

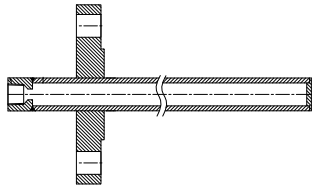
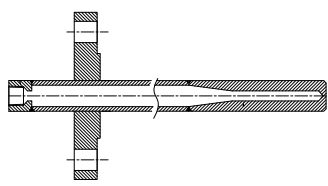
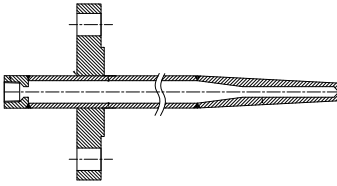
Applications

Chemical and petrochemical industry

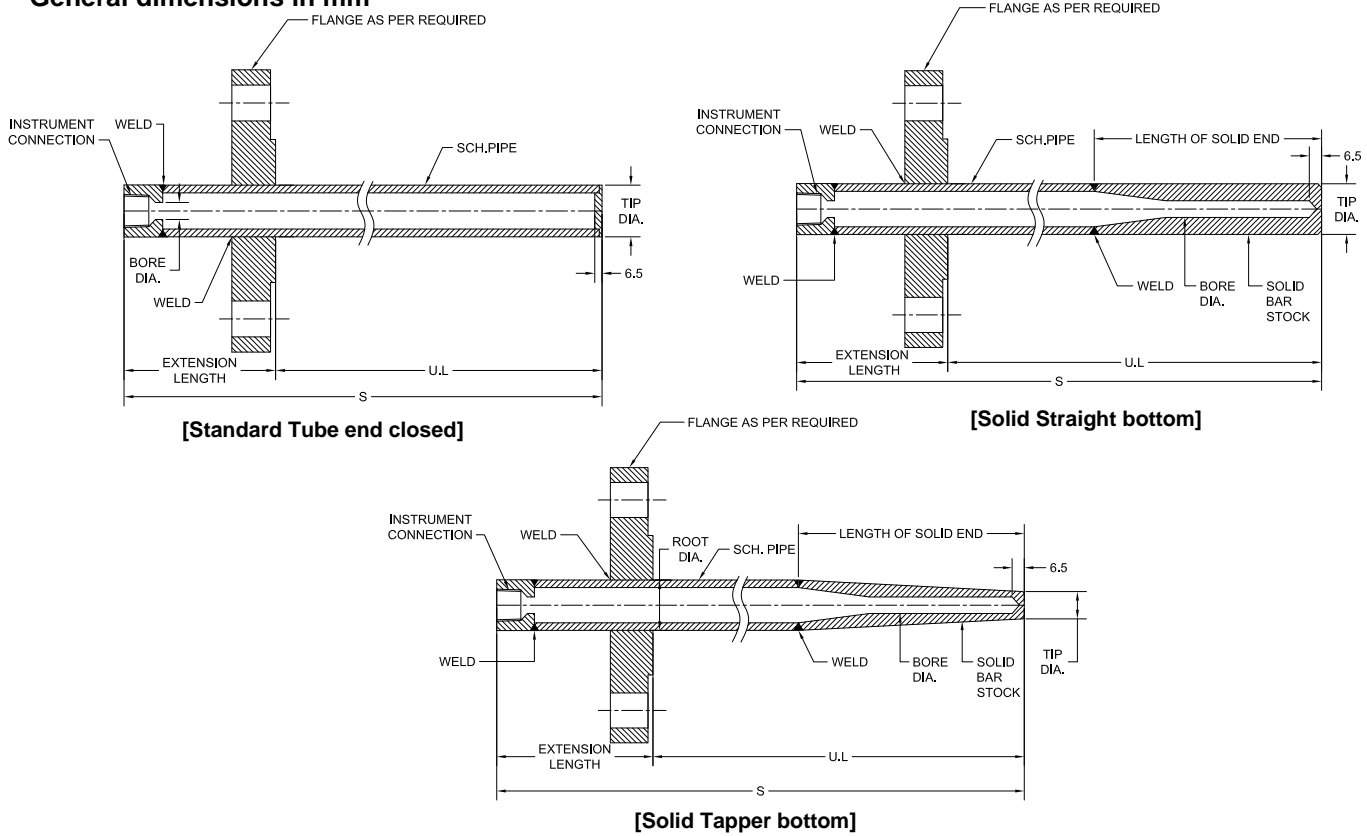
Machine and apparatus construction

Food and beverage industry

Pulp and paper industry

Technical specification	Standard (=)			SB		TB
Built-up design						
	Built up design, Fabricated from pipe optional solid end piece according to customer specification					
Construction shank	Straight			Stepped		Tapered
Bore diameter in mm	6.6	7.0	9,8	10.5	12.5, others on request	
Pressure rating	Depending on flange rating					
Process connection	Depending on flange rating					
DIN	DN25, DN40, DN50, DN80, DN100, others on request					
Size	DN25, DN40, DN50, DN80, DN100, others on request					
Pressure class	PN10, PN16, PN25, PN40, PN64, PN100, others on request					
ANSI/ASME	1, 1½, 2, 3, 4, others on request					
Size [inch]	1, 1½, 2, 3, 4, others on request					
Pressure class [lbs]	150, 300, 600, 900, 1500					
Facing	Raised face, Flat face, Ring joint type					
	Other forms, connections or standards are available on request					
Instrument connection	½" NPT (F) or ½" BSP (F)					
Material	Carbon steel, Stainless steel 304 (1.4301), 304L (1.4306), 316 (1.4401), 316L (1.4404), 316Ti (1.4571), 321 (1.4541) Monel, Hastelloy-B, Hastelloy-C, Inconel, Tantalum, Duplex, Nickel Other materials or coatings on request					
Certifications & tests	Material certificate DIN EN 10 204 3.1, Hydrostatic test, dye penetration test, X-ray, Hardness test, ISO 15156/NACE certificate					
Accessories, options	Thermometers, RTD, thermocouples					

General dimensions in mm



Order information

Process connection	U-length in mm	Instrument connection	Extension length	Bottom end type	Bore	Pipe Type	Material	Flange facing	Pressure rating	Options																			
ANSI Flanged (10) 1" (15) 1 1/2" (20) 2" (30) 3"	(U...) Specify length in mm ² E.g. (250) for u length 250mm	(04T) 1/2" NPT(F) (15T) 1/2" BSP(F)	(=) Standard, 57mm (EX) Specify Extension Length in mm E.g. (E100) for 100mm extension length	(=) Standard Tube end closed (SBX) Solid Straight bottom (TBX) Solid Tapper bottom	(6.6) 6.6mm (7.0) 7.0mm (8.5) 8.5mm (9.8) 9.8mm (10.5) 10.5mm (12.5) 12.5mm	(D) 1/2" SCH 40 (E) 1/2" SCH 80 (H) 3/4" SCH 80 (K) 1" SCH 80	(B) Carbon steel (C) 304 (1.4301) (CL) 304L (1.4306) (S) 316 (1.4401) (SL) 316L (1.4404) (SH) 321 (1.4541) (ST) 316Ti (1.4571) (M) Monel (H) Hastelloy C (N) Nickel (DU) Duplex (IN) Inconel flange material is the same as the shank material unless specified with code (FL.), see options	ANSI Flange (RF) Raised face (FF) Flat face ¹⁾ (RTJ) Ring joint type	ANSI Flange 150 300 600 900 1500	(NH) Tagging stamped (CC) Cap & chain stainless steel (BP) Buffed and polished (FL.) Specify flange as per material code (e.g. FLM flange material Monel) Certification (CDW2) Dye penetration test (CDRH) Rockwell hardness test (XR1) X-ray for weld joint (XR2) X-ray for bore concentricity (CDW9) 100 bar 1 min. (CD3) 3.1 Material certi. (CD5) NACE MR 01-75 / ISO 15156-2003 ³⁾ (CDMA) NACE MR 0175 / ISO 15156-2005 ⁴⁾ (CDPMI) Positive material certificate																			
											DIN Flanged (DN25) (DN40) (DN50) (DN80) (DN100)	others on request	others on request	others on request	others on request	others on request	others on request	the flange facing depends on the process connection (nominal size and nominal pressure)	DIN flange DIN flange PN10 PN16 PN25 PN40 PN64 PN100										
																				others on request	others on request	others on request	others on request	others on request	others on request				
																										others on request	others on request	others on request	others on request

1) only for size < 3" 3) only for material (H) and (DU) 4) only for material (SL)

How to order

Process connection	Type	U-length	Instrument connection	Extension length	Bottom end type	Bore	Pipe type	Material	Flange facing	Pressure rating	Options
15	TWB	1000	04T	=	TB150	9.8	E	SL	RF	150	NH

Precision Mass Products Pvt. Ltd.

Plot No.: 2306, G.I.D.C. Chhatral, Ta: Kalol, Dist.: Gandhinagar,
 Chhatral 382 729, Gujarat, India.
 Telephone: +91-2764 233681/82/83
 Email: sales@precisionmass.com

Fax: +91-2764-233440
 www.precisionmass.com

- North Zone : sales.delhi@precisionmass.com
- East zone : sales.kolkata@precisionmass.com
- West zone : sales.mumbai@precisionmass.com
- South zone : sales.chennai@precisionmass.com